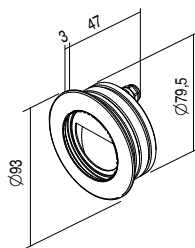
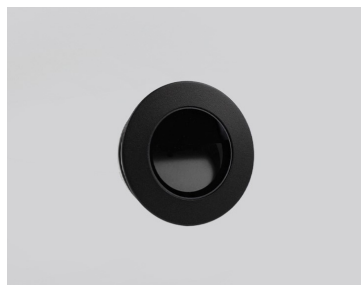



AURA STEPLIGHT 24Vdc

IP65 IK08 CE   TIPOLOGIA / *TPOLOGY*Segnapassi | *Steplight*POSIZIONE INSTALLATIVA | *INSTALLATION POSITION*A parete | *Wall*AMBIENTE INSTALLATIVO | *INSTALLATION LOCATION*Esterno | *Outdoor*

AURA STEPLIGHT

6,5W 81 mm **Finish .01**
kg 0,39 **Finish .06 .10**
kg 0,51

AURA STEPLIGHT 24Vdc

CARATTERISTICHE ELETTRICHE | ELECTRICAL FEATURES

POTENZA ASSORBITA POWER CONSUMPTION	6,5W
ALIMENTAZIONE POWER SUPPLY	24Vdc
ALIMENTATORE POWER SUPPLY UNIT	6,5W - 24Vdc (non incluso not included)
COLLEGAMENTO CONNECTION	Parallelo Parallel

CARATTERISTICHE ILLUMINOTECNICHE | LIGHTING FEATURES

COLORE LED LED COLOUR	2200K, 2700K, 3000K, 4000K, Red, Green, Blue
INDICE RESA CROMATICA CRI CRI	>80 (2200K, 2700K, 3000K, 4000K)
BINNING	3 step MacAdam 3 MacAdam steps
OTTICHE OPTICS	ASYM
UGR	<19
FLUSSO REALE EMESSO - 3000K REAL OUTPUT FLUX	6,5W 94lm
DURATA MEDIA LED AVERAGE LED LIFE	50.000h L80 B10

CARATTERISTICHE MECCANICHE | MECHANICAL FEATURES


PESO WEIGHT	Finishig .01	Kg 0,39
	Finishig .06 .10	Kg 0,51
FINITURE FINISHES	Alluminio anodizzato, Bianco txt, Acciaio, Nero txt, Corten, Acciaio spazzolato, Antracite txt, Sand, Bronzo anodico opaco Anodized aluminium, txt white, steel, txt black, corten, brushed steel, txt anthracite, sand, anodized bronze matt	
INSTALLAZIONE INSTALLATION	A incasso su cartongesso o legno con molla (non inclusa), a incasso su muratura per interferenza tramite o-ring (incluso) e con cassaforma (non inclusa) Recessed on plasterboard or wood with spring (not included), recessed on brickwork through o-ring (included) and housing box (not included)	
MATERIALE MATERIAL	Corpo in alluminio anticorrosivo, ghiera in alluminio anticorrosivo (versione alluminio) Ghiera in acciaio inox AISI 316L (versione inox), vetro temperato serigrafato Anticorrosive aluminium body, anticorrosive aluminium trim (aluminium version), AISI 316L stainless steel trim (inox version), silk-screen printed tempered glass	

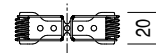
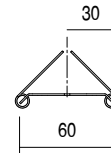
CARATTERISTICHE GENERALI | GENERAL FEATURES


TEMPERATURA DI ESERCIZIO OPERATING TEMPERATURE	-10°C +45°C
GRADO DI PROTEZIONE INGRESS PROTECTION	IP65
GRADO DI RESISTENZA IMPACT RESISTANCE	IK08
GLOW WIRE TEST GLOW WIRE TEST	960°C
TEMPERATURA MASSIMA APPARECCHIO MAX. TEMPERATURE OF FIXTURE	50° @ Ta = 25°
CLASSE DI ISOLAMENTO APPLIANCE CLASS	III
CALPESTABILE WALKOVER	No
CARRABILE DRIVE OVER	No
SICUREZZA STANDARD STANDARD SAFETY	/
SICUREZZA FOTOBIOLOGICA PHOTOBIOLOGICAL SAFETY	GR1

AURA STEPLIGHT 24Vdc

ACCESSORI | ACCESSORIES

CODICE CODE	ML060
TIPOLOGIA TYPOLOGY	Molla di torsione <i>Torsion spring</i>  kg 0,01
MATERIALE MATERIAL	Acciaio inox <i>Stainless steel</i>



CODICE CODE	CA081
TIPOLOGIA TYPOLOGY	Cassaforma <i>Housing box</i>  kg 0,08
MATERIALE MATERIAL	PVC <i>PVC</i>

